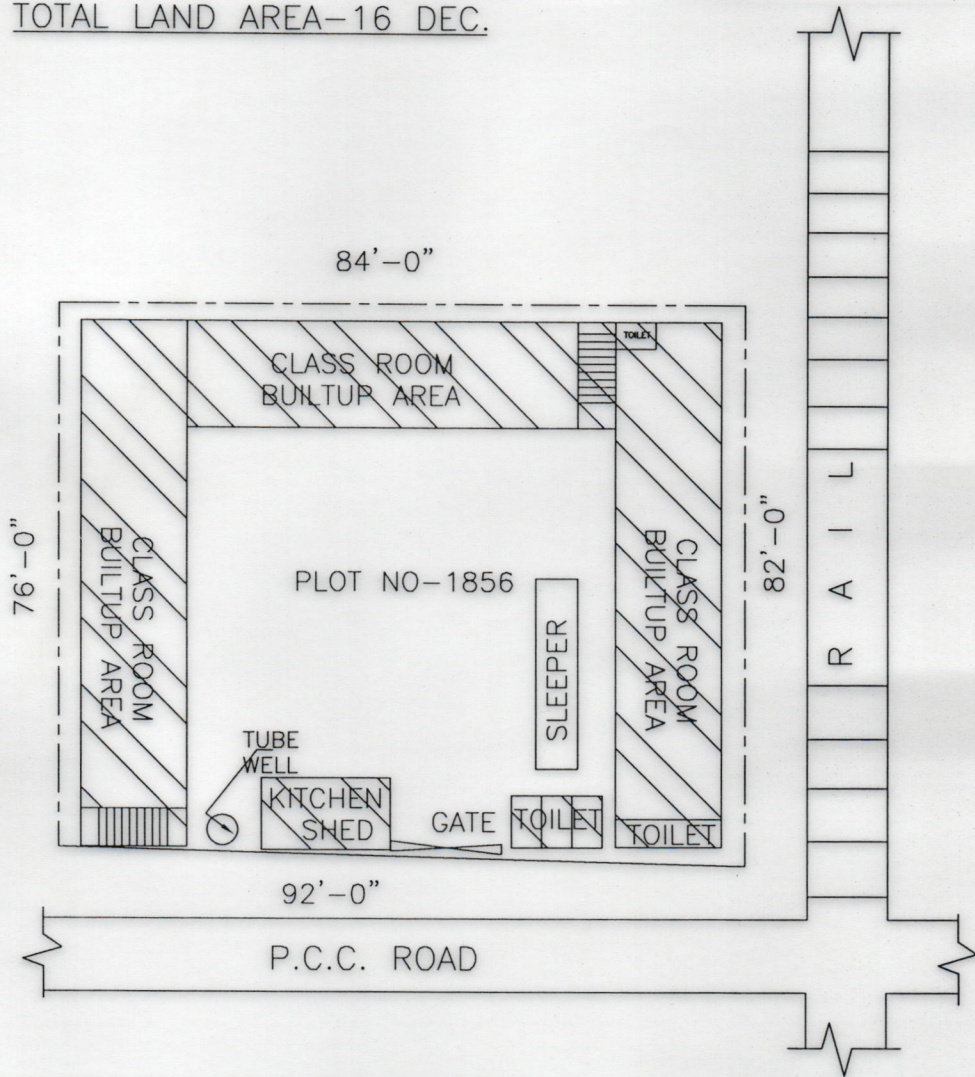


SCHOOL COMPOUND OF BANARAMPUR PRIMARY SCHOOL.  
 PLOT NO- 1856, MOUZA-SANTOSHPUR J.L. NO:- 13,  
 MURARAI CIRCLE, P.S.: - MURARAI, DIST:-BIRBHUM.

SCALE- 1:250

TOTAL LAND AREA-16 DEC.



INDEX		
SL	DESCRIPTION	QUANTITY
01	NAME OF SCHOOL	BANARAMPUR PRY .
02	DISE CODE NO	19081400602
03	CIRCLE	MURARAI
04	BLOCK	MURARAI-I
05	PANCHAYAT	RAJGRAM
06	MOUZA	SANTOSHPUR
07	JL NO	13
08	PLOT NO	1856
09	KHATIAN NO	176
10	TOTAL LAND AREA OF SCHOOL	6969.6 Sqft.
11	USEABLE AREA	3718.5 Sqft.
13	FALLOW AREA	3251 Sqft.

*M. Srinidhi Konai*  
 T.I.C. 22/05/15  
 Banarampur Primary School  
 P.O:-Banarampur, Birbhum

*Santosh Kumar Sen*  
 Surveyer  
 Birbhum