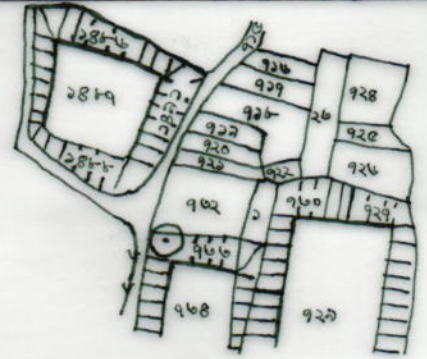


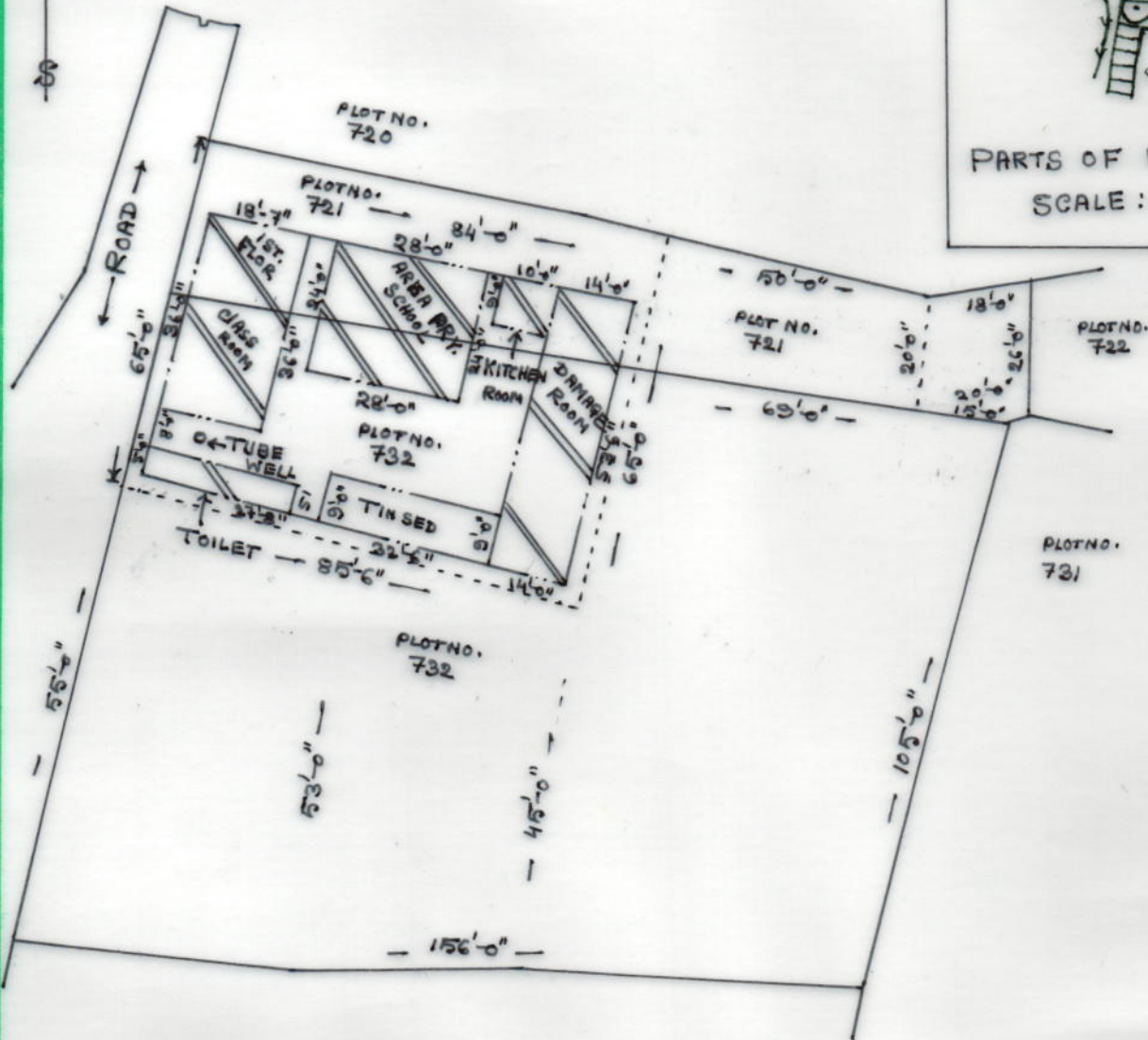
MOUZA - SONTOSHPUR, J. L. NO. - 56,
P. S. - NANOOR, DIST. - BIRBHUM.

SCALE - 33'-0" = 1"

MOUZA - SONTOSHPUR, J. L. NO. - 56,
P. S. - NANOOR, DIST. - BIRBHUM, MAP - C-6



PARTS OF MOUZA MAP
SCALE :- 1" = 330'-0"



SCHEDULE

SCHOOL NAME:- SONTOSHPUR PRIMARY SCHOOL
DISE CODE :- 19080306101
CIRCLE:- NANOOR SOUTH
BLOCK:- NANOOR
PANCHAYET :- NANOOR
MOUZA :- SONTOSHPUR
J. L. NO. - 56
PLOT NO. - 721, 732 (C.S)
KHATIAN NO. -
AREA OF LAND:- 5508 S.Ft. = 0.12645 ACRE
USABLE AREA = 2363 S.Ft.
FALLOW AREA = 3145 S.Ft.
AREA OF ANG. CENTRE = NIL
AREA OF UPPER PRY. = NIL

Drawn by
Md. Amul Hossain
14.5.2015

M. A. Hossain
(S. Surveyor)

At. Agortore

P.O. Nancoor, Dt. Birbhum, W.B.

B.R. No.

AX-RDKK/2010-11/MES
107849